

Region - County - District Code
56 - 099 – 0910

An Integrated School Improvement Plan

**For Kelvin Grove School
School Year 2010-11 & 2011-12**



The Illinois School Code

The district has ensured for each attendance center a written School Improvement Plan which is kept in the attendance center and is available to all State Board personnel, district personnel and community members.

I. Demographics

Kelvin Grove Junior High School School Profile and Demographics

Kelvin Grove Junior High School is located in Lockport, Illinois, a southern suburb of Chicago in Will County. This northern Illinois locale was established in 1830 and is home to over 24,000 residents. Steeped in the rich canal heritage of the 1800s, Lockport is a delightful mix of quaint history and modern charm.

Lockport is situated 35 miles southwest of Chicago and 5 miles north of Joliet, and is easily accessible via Interstate Highways 355, 80 and 55. Also, Lockport's Historic District is part of the 120-mile long Illinois & Michigan Canal National Heritage Corridor.

School District 91 enjoys a close-working relationship with all of the City of Lockport municipalities. The school and district work on numerous projects hand-in-hand with the Lockport Park District, library, and police and fire departments.

The district has very active parent organizations that spend a great deal of time, effort, and money to further improve the programs of all the schools within School District 91. Among these are the P.T.O., District 91 Education Foundation, Music Boosters, and the District 91 Athletic Association.

Kelvin Grove Junior High School houses fourth through eighth grade students with a 2010 enrollment of 371 students. Along with a rigorous curriculum of language arts and reading, mathematics, science, social studies and physical education, students also have exposure to classes in technology, music, art, and character education.

Robust technology integration has been initiated in all curricular areas. Networked computers are installed in every classroom along with having three networked technology labs. All classrooms are connected to the Internet. Each classroom currently has a Brightlink installed to enhance curriculum. A SmartBoard is currently housed in one of our computer labs.

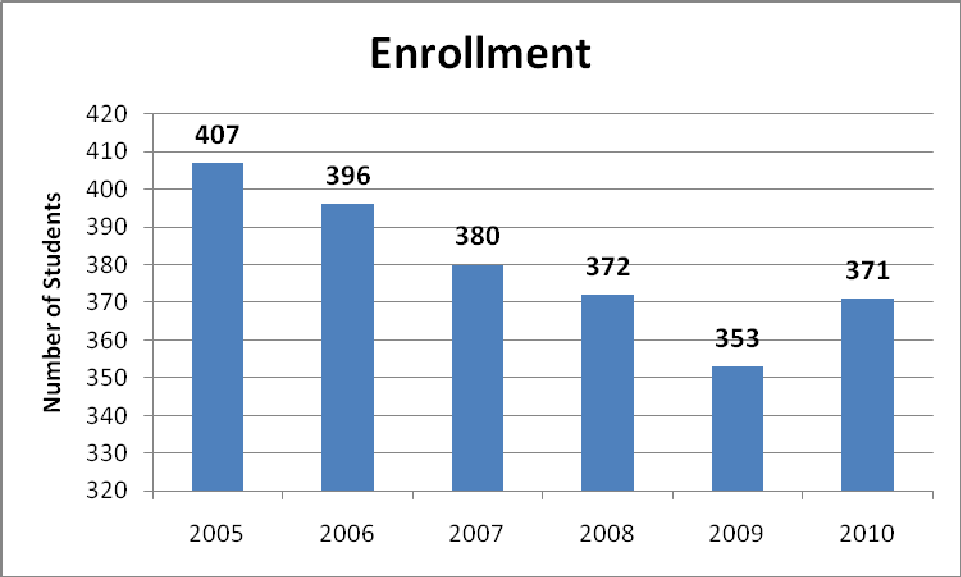
Kelvin Grove Junior High School has a dedicated, well-trained staff of educators. Currently, approximately 25.7% of the teaching staff are enrolled in an advanced degree program or have received their master's degree. Kelvin Grove Junior High average experience is 11.4 years in the classroom with an excellent balance between beginning, experienced, and veteran teachers. Salary incentives and tuition reimbursement provisions have helped to increase the number of educators pursue their advanced degrees, a trend which is expected to continue.

Kelvin Grove Junior High students have the opportunity to participate in numerous extra-curricular activities. The band program, comprised of a beginning and concert band, is recognized as one of the finest junior high programs in the Lockport area. In addition to band, the junior high also offers a choir to students interested in singing. The athletic program has also achieved great success and achievement through the years. Kelvin Grove Junior High School currently offers students the opportunity to participate in boys baseball and girls softball,

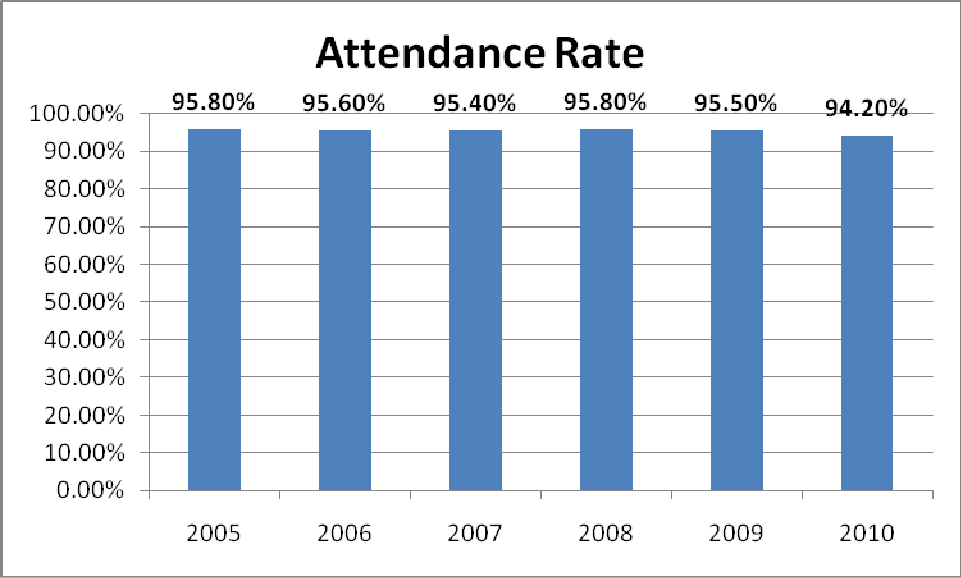
volleyball, basketball, track, and cheerleading. For students who do not participate in competitive athletics but have an interest in sports, after-school intramurals is offered during various times of the year.

Extra-curricular programs at Kelvin Grove Junior High offer students a variety of opportunities to explore and engage in activities that they might not have had the opportunity to experience outside of school. Kelvin Grove Junior High also supports student council, Junior Beta Club, Drama Club, Science Club, Art Club and a yearbook committee.

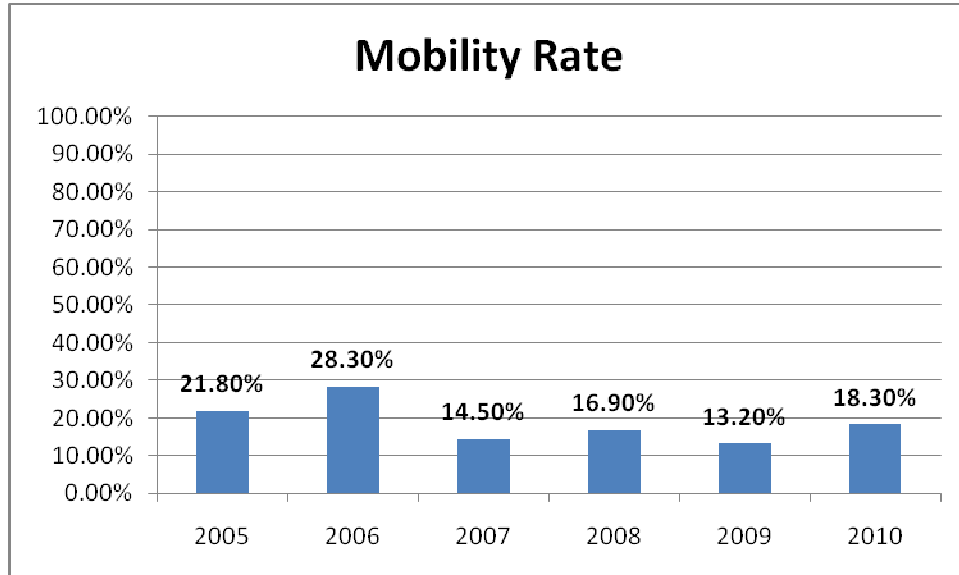
Student Body Profile



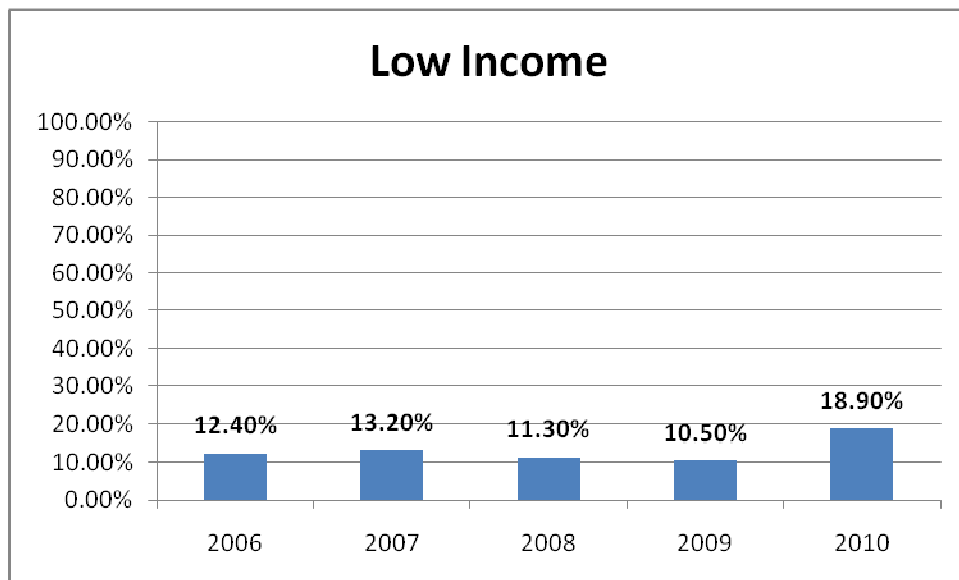
Enrollment over the past six years has had a high of 407 and a low of 353 students. Enrollment is expected to remain consistent for the next 5 years based upon current enrollments for Milne Grove Elementary School.



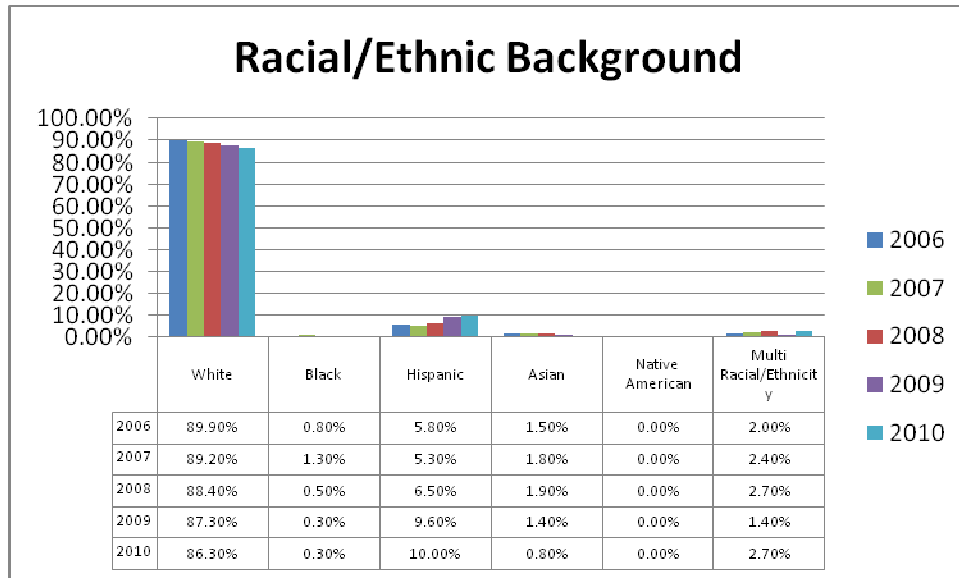
Attendance rates have remained consistently high at a rate between 94.2%-95.8%.



The mobility rate for Kelvin Grove has remained between 13.2% and 28.3% over the past 6 years.



The percent of students coming from low-income households has increased significantly over the past five years. Given the current economic environment, there is no indication that this will decline in the near future.



There has been slight decline in the percentage of white students and a slight increase in the Hispanic population in the past five years.

Retention/Expulsion Rate

In the past four years, no students have been expelled and none have been retained.

Annual Yearly Progress Statement

Kelvin Grave Junior High has met annual yearly progress in respect to the terms and conditions of No Child Left Behind. The junior high does not have enough students classified as Racial/Ethnic under NCLB to classify as a sub-group.

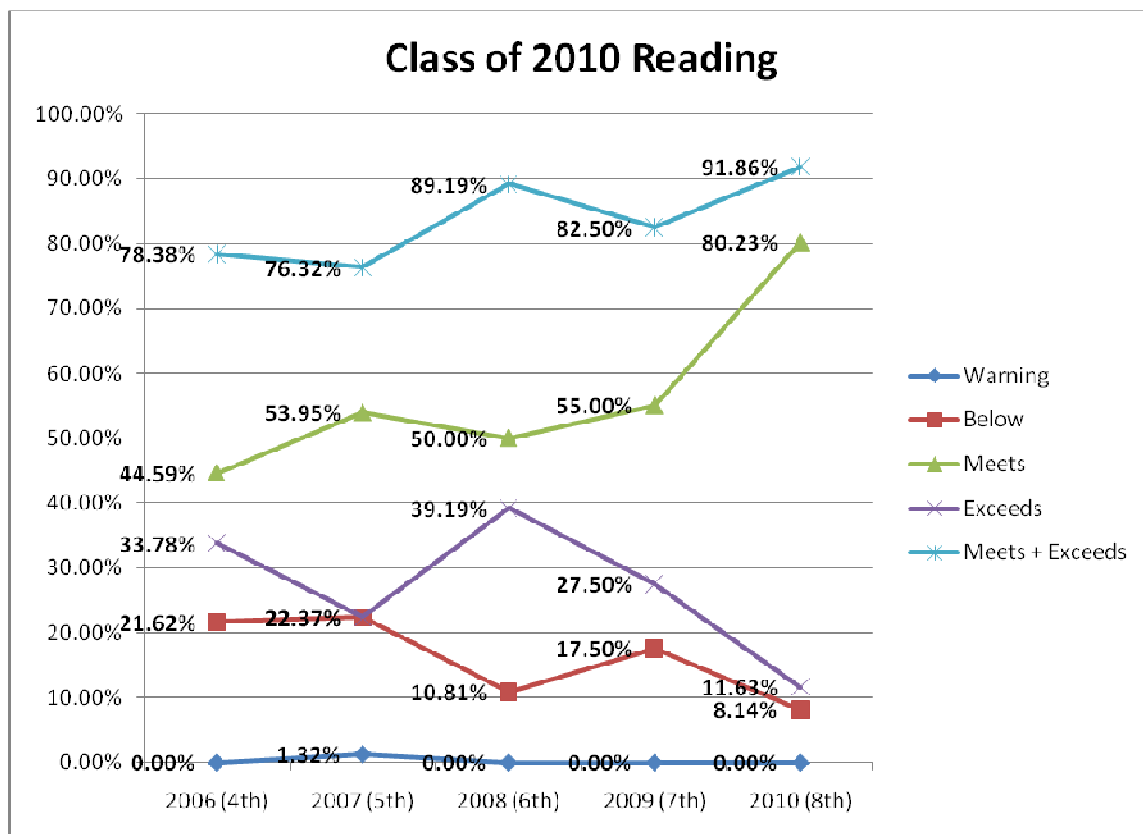
II. Data Collection and Analysis / Gap Analysis

Kelvin Grove Junior High School ISAT Results

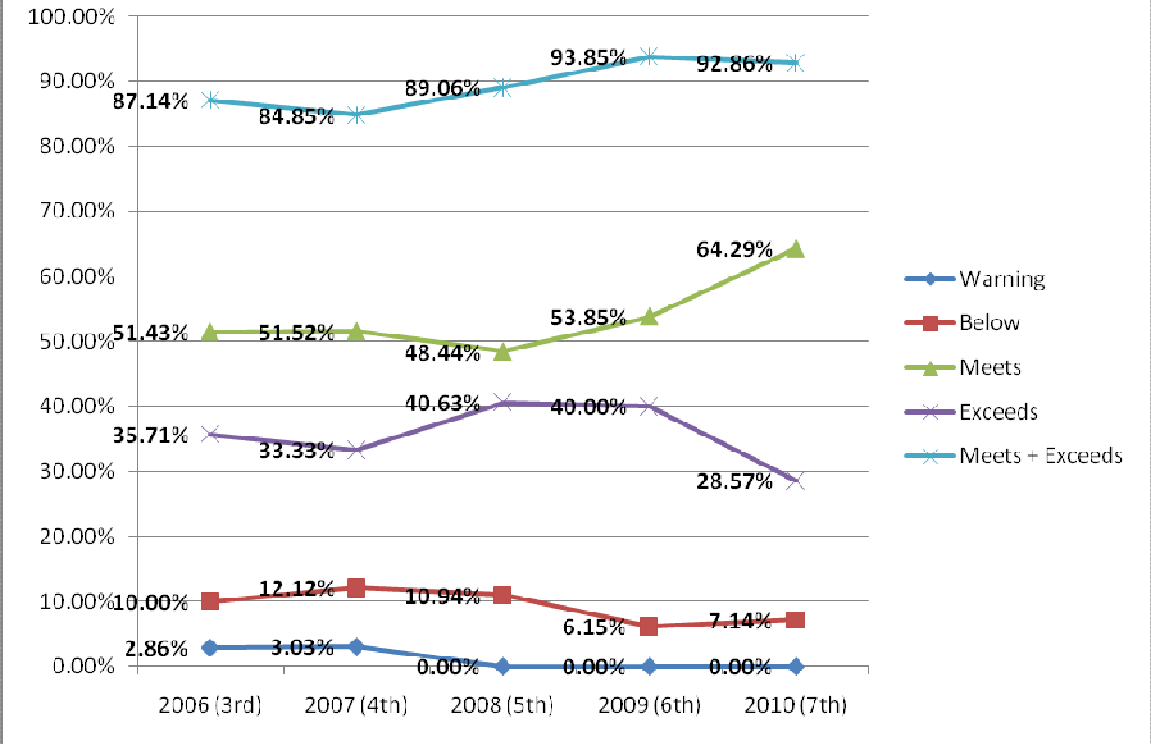
Reading

After reviewing ISAT scores for the past five years, 8th grade students consistently exceeded state averages on the reading portion of these assessments. The eighth grade classes over the past few years have not only shown that they routinely score well above the state average, but also have shown consistent and steady gains over the past five years.

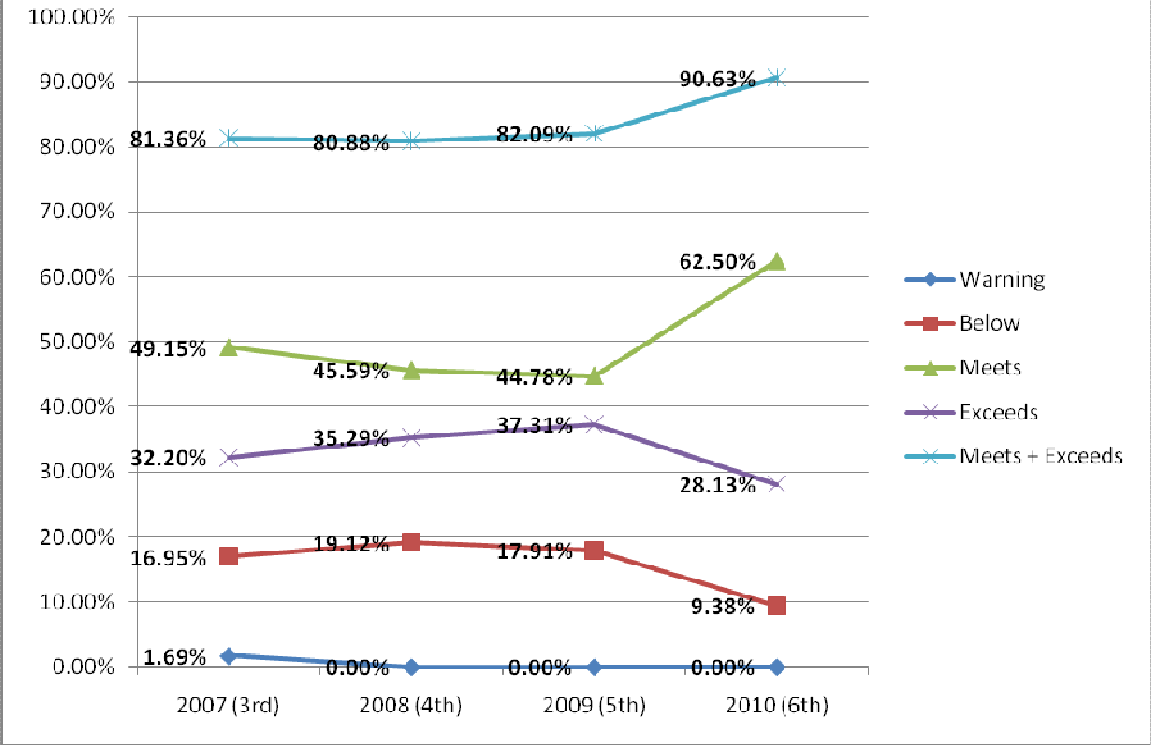
Reading Trend Results



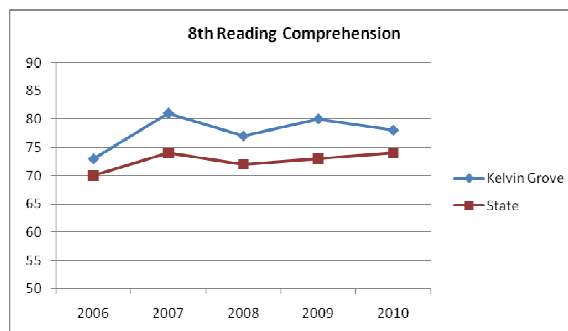
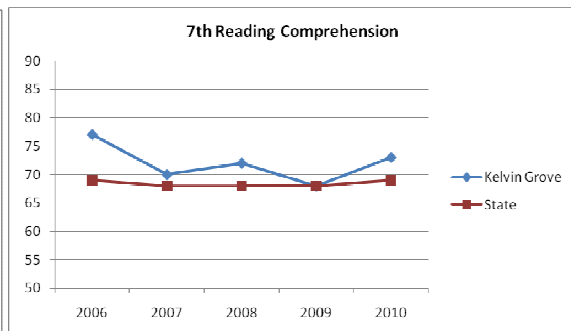
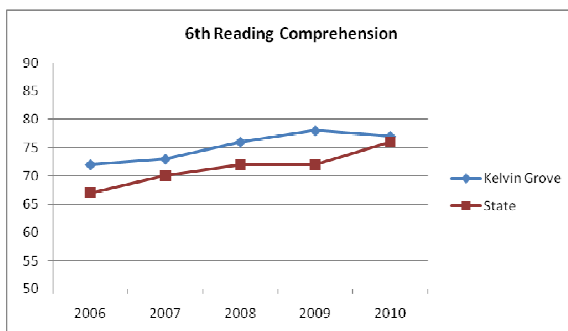
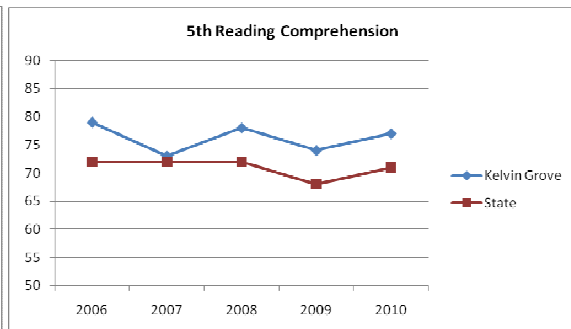
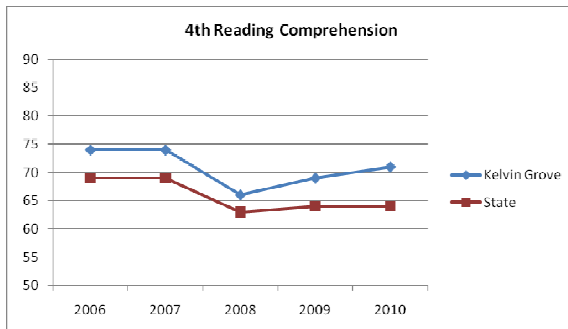
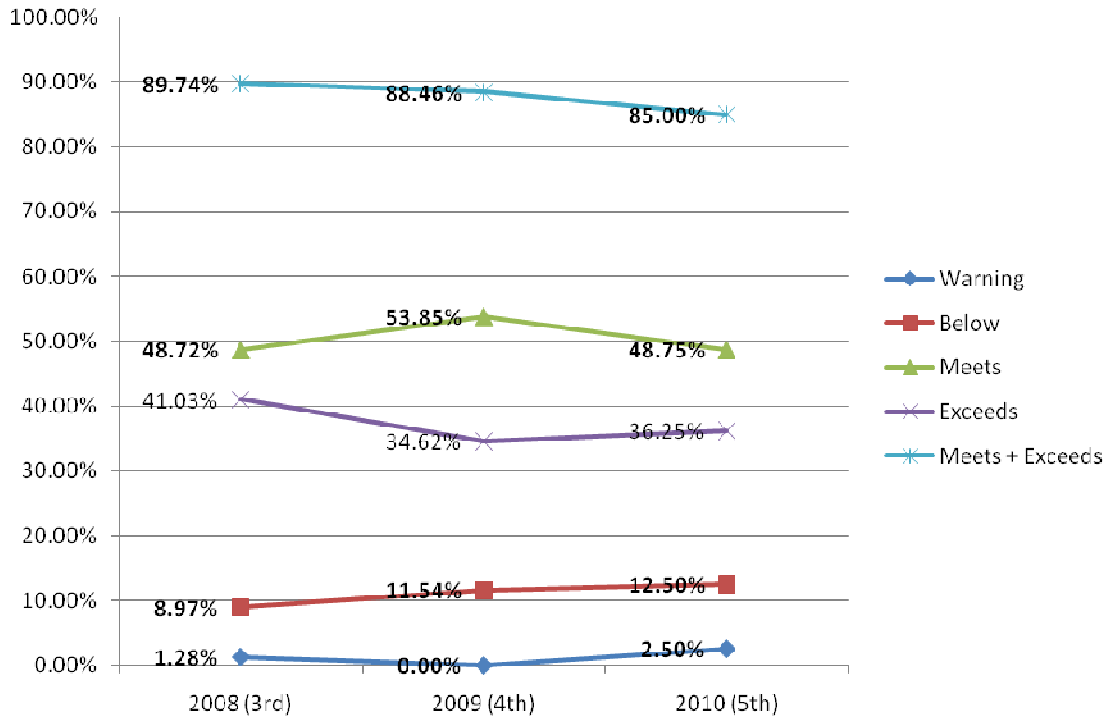
Class of 2011 Reading



Class of 2012 Reading



Class of 2013 Reading



II. DATA COLLECTION AND ANALYSIS AND GAP ANALYSIS WORKSHEET - page 2

II-D. Priorities Based on Gap Analysis: Given the results of the Data and Gap Analyses from Columns II-A, II-B, II-C on the prior page, please indicate in column II-D-1 the school’s priority areas (i.e., goals) to be included in the integrated school improvement plan and aligned with the vision, In Column II-D-2, indicate the resources needed to support achievement of the goals. In the II-D-3 column, consider the priority needs and the resources to support the goals and rank-order each goal (i.e., 1, 2, 3 and so on, with “1” the Most Important, Next Most Important.) These prioritized areas are then written as measurable goals for the Integrated Action Plan.

III. Integrated Action Plan

Priority Area/Goal	Resources to Support Goal Achievement	Activities
<p>To improve student comprehension across curricular areas in order to facilitate increased student achievement <i>measured by the following:</i></p> <ul style="list-style-type: none"> ➤ ISAT Data by curricular area and subtest scores, across grade levels, will be used to assess progress. ➤ AimsWeb data collected 3 times a year for benchmarking purposes. ➤ Pre- and Post Survey data will be utilized to assess Student, Teacher, and Parent perceptions of students’ comprehension abilities and progress in meeting goal. 	<ul style="list-style-type: none"> • <u>Illinois Interactive Report Card</u> (IIRC), Northern Illinois University • <u>ISBE Web Application Security System</u> (IWAS) • <u>SurveyMonkey</u> electronic survey developing website • <u>Microsoft Excel</u> program used for data analysis and chart/graph development • <u>Connect Ed</u> software program for parent communication • AimsWeb Screener • RtI Consultant • Differentiation Consultant 	<ol style="list-style-type: none"> 1. Implement AimsWeb Screening for all students in the area of Reading Comprehension. 2. Create Common cross-curricular vocabulary 3. Begin developing an LA curriculum framework based upon the new Common Core Standards. 4. Utilize nonfiction reading strategies across all curricular areas 5. Implement RtI in all grade levels with an increasing focus on Reading Comprehension 6. Train staff in data analysis based upon the trainer of trainer model 7. Develop surveys to collect data on perceived effectiveness of reading strategies for parents, students, and staff. 8. Develop a collaborative relationship with Richland School District 88a to work on assessment strategies. 9. Work with the Differentiation Specialist to continue enhance instruction to meet the needs of all students

Priority Area/Goal	Resources to Support Goal Achievement	Activities
<p>To enhance the current Kelvin Grove building climate by promoting Respect, Responsibility, Collaboration and Leadership with all students and staff in terms of meeting the academic, social, emotional, and behavioral needs of ALL students. <i>This goal will be measure by the following:</i></p> <ul style="list-style-type: none"> ➤ <i>Student Climate Survey administered in fall 2010 to establish baseline data, then administered annually in the fall.</i> ➤ <i>Staff Climate Survey (same as above)</i> ➤ <i>Electronic Parent Satisfaction Survey on website (ongoing data collected)</i> 	<ul style="list-style-type: none"> • Climate Committee • PBIS Committee • <u>SurveyMonkey</u> electronic survey developing website • <u>Microsoft Excel</u> program used for data analysis and chart/graph development • <u>Connect Ed</u> software program for parent communication • Leadership training for staff • Training from Guardian Angel Staff • <u>Steps to Respect</u> bullying prevention program 	<ol style="list-style-type: none"> 1. Develop and administer periodic climate surveys to students, parents and staff to assess climate strengths and areas of need. 2. Incentive activities will be provided to groups of students who demonstrate the appropriate character concepts. 3. Highlight student activities and achievements 4. Improve aesthetics of building and grounds to create a strong sense of school pride 5. Encourage entire school community to join and participate in parent organizations 6. Staff leadership and teambuilding training in spring of 2011 7. PBIS incentive items will be provided to individual students for purchase with earned KG Cash. 8. Establish Climate Committee 9. Increase staff and student participation and/or attendance at school events.

INTEGRATED ACTION PLAN

<p>SCHOOL IMPROVEMENT GOAL (A measurable goal based on gap analysis) Goal # <u>1</u> : To improve student comprehension across curricular areas in order to facilitate increased student achievement <i>measured by the following:</i></p> <ul style="list-style-type: none"> ➤ ISAT Data by curricular area and subtest scores, across grade levels, will be used to assess progress. ➤ AimsWeb data collected 3 times a year for benchmarking purposes. ➤ Pre- and Post Survey data will be utilized to assess Student, Teacher, and Parent perceptions of students' comprehension abilities and progress in meeting goal. 	<p>RATIONALE FOR THE GOAL (e.g., supporting data, reasons that the goal is a priority) Despite overall increases in ISAT reading scores, our students continue to correctly answer about 75% of the reading comprehension questions correctly. Although these percentages are above the state averages, we feel these are areas in which our students are not achieving to their potential. Given the strong correlation with these skills and overall comprehension of the specific curricular area, we feel we need to continue emphasizing cross-curricular comprehension and problem-solving concepts over the next two years.</p>
<p>STANDARD(S) SUPPORTED BY THIS GOAL: All Standards related to Illinois Goals 1,2,5-18,22-25, 27-30</p>	<p>EVALUATION (How will the goal be measured?) <i>Include assessment instrument, assessment expectations, success indicators. ISAT and AimsWeb</i></p>

POSSIBLE FUNDING SOURCES (Use codes): General Revenue Funds (GR)

SPECIFIC, MEASURABLE STEPS TO BE TAKEN (ACTIVITY/STRATEGY)	TIMELINE	PERSONS RESPONSIBLE	DETAILED EXPLANATION OF EXPENDITURES	COST ANALYSIS
<p><u>Activity 1</u> Implement AimsWeb Screening for all students in the area of Reading Comprehension.</p> <p><u>Measure for the Activity</u> 3% increase in Percentage of items answered correctly in the area of Grade 6, 7 & 8 ISAT Reading Comprehension over two years.</p> <p><u>Population Served</u> Students in grades 4-8</p>	<p>09/10-ongoing</p>	<p>All Staff</p>	<ul style="list-style-type: none"> • Teachers administering the AimsWeb probe three times a year during the scheduled RtI classtime. 	<p>SALARIES/STIPENDS \$</p> <p>CONTRACTUAL SERVICES \$</p> <p>MATERIALS/SUPPLIES \$</p> <p>TRAVEL \$</p> <p>OTHER \$</p> <p>TOTAL for the Activity \$</p>
<p><u>Activity 2</u> Create Common cross-curricular vocabulary</p> <p><u>Measure for the Activity</u> Common vocabulary lists will be created and distributed throughout all curricular areas.</p> <p><u>Population Served</u> Students in grades 4-8</p>	<p>9/11- 6/12</p>	<p>All Staff</p>	<ul style="list-style-type: none"> • Utilize School Improvement Days for teachers to create lists. 	<p>SALARIES/STIPENDS \$</p> <p>CONTRACTUAL SERVICES \$</p> <p>MATERIALS/SUPPLIES \$</p> <p>TRAVEL \$</p> <p>OTHER (specify) \$</p> <p>TOTAL for the Activity \$</p>

<p><u>Activity 3</u> Begin developing an LA curriculum framework based upon the new Common Core Standards.</p> <p><u>Measure for the Activity</u> Minutes of meetings and artifacts</p> <p><u>Population Served</u> Students and staff in grades 4-8</p>	<p>9/11 and ongoing</p>	<p>Grade level representatives and KG Admin.</p>	<ul style="list-style-type: none"> Utilize School Improvement Days 	<p>SALARIES/STIPENDS \$</p> <p>CONTRACTUAL SERVICES \$</p> <p>MATERIALS/SUPPLIES \$</p> <p>TRAVEL \$</p> <p>OTHER (specify) \$</p> <p>TOTAL for the Activity \$</p>
<p><u>Activity 4</u> Utilize nonfiction reading strategies across all curricular areas</p> <p><u>Measure for the Activity</u> Teachers will turn in sample activities each semester.</p> <p><u>Population Served</u> Students and staff in grades 4-8</p>	<p>9/11 – 6/12</p>	<p>All Staff</p>	<ul style="list-style-type: none"> None 	<p>SALARIES/STIPENDS \$</p> <p>CONTRACTUAL SERVICES \$</p> <p>MATERIALS/SUPPLIES \$</p> <p>TRAVEL \$</p> <p>OTHER (specify)</p> <p>TOTAL for the Activity \$</p>
<p><u>Activity 5</u> Implement RtI in all grade levels with an increasing focus on Reading Comprehension</p> <p><u>Measure for the Activity</u> AimsWeb scoring and placement into Tier II and Tier III groups.</p> <p><u>Population Served</u> Students and staff in grades 4-8</p>	<p>09/10-ongoing</p>	<p>All Staff</p>	<ul style="list-style-type: none"> AimsWeb Testing 	<p>SALARIES/STIPENDS \$</p> <p>CONTRACTUAL SERVICES \$</p> <p>MATERIALS/SUPPLIES \$</p> <p>TRAVEL \$</p> <p>OTHER (specify)</p> <p>TOTAL for the Activity \$</p>

<p><u>Activity 6</u> Train staff in data analysis based upon the trainer of trainer model</p> <p><u>Measure for the Activity</u> Send teachers to data analysis staff development and utilize staff meeting and other school improvement planning times and staff survey.</p> <p><u>Population Served</u> Students and staff in grades 4-8</p>	3/11	<p>Laura Swayne Marcie Stateman Lynn Brock Scott Pritchard</p>	<ul style="list-style-type: none"> Send three staff members to Data Analysis Workshop at the Professional Development Alliance 	<p>SALARIES/STIPENDS \$</p> <p>CONTRACTUAL SERVICES \$</p> <p>MATERIALS/SUPPLIES \$</p> <p>TRAVEL \$</p> <p>OTHER (specify)</p> <p>TOTAL for the Activity \$</p>
<p><u>Activity 7</u> Develop surveys to collect data on perceived effectiveness of reading strategies for parents, students, and staff.</p> <p><u>Measure for the Activity</u> Analyze data collected from survey and establish baseline data.</p> <p><u>Population Served</u> Students and staff and parents in grades 4-8</p>	1/11-ongoing	<p>Principal School Improvement Team</p>	<ul style="list-style-type: none"> Subscription to Survey Monkey 	<p>SALARIES/STIPENDS \$</p> <p>CONTRACTUAL SERVICES \$</p> <p>MATERIALS/SUPPLIES \$</p> <p>TRAVEL \$</p> <p>OTHER (specify)</p> <p>TOTAL for the Activity \$</p>
<p><u>Activity 8</u> Develop a collaborative relationship with Richland School District 88a to work on assessment strategies.</p> <p><u>Measure for the Activity</u> Exit slips, artifacts, observations</p> <p><u>Population Served</u> Students and staff grades 4-8</p>	09/10-ongoing	<p>KG Admin George Capps District Office</p>	<ul style="list-style-type: none"> RtI Consultant to be funded through grants garnered by the Lockport Area Consortium. 	<p>SALARIES/STIPENDS \$</p> <p>CONTRACTUAL SERVICES \$</p> <p>MATERIALS/SUPPLIES \$</p> <p>TRAVEL \$</p> <p>OTHER (specify)</p> <p>TOTAL for the Activity \$</p>
<p><u>Activity 9</u> Work with the Differentiation Specialist to continue enhance instruction to meet the needs of all students</p> <p><u>Measure for the Activity</u> Artifacts and observations</p> <p><u>Population Served</u> Students and staff grades 4-8</p>	09/10-ongoing	<p>KG Admin Amy Brodeur District Office</p>	<ul style="list-style-type: none"> RtI Consultant 	<p>SALARIES/STIPENDS \$</p> <p>CONTRACTUAL SERVICES \$</p> <p>MATERIALS/SUPPLIES \$</p> <p>TRAVEL \$</p> <p>OTHER (specify)</p> <p>TOTAL for the Activity \$</p>

INTEGRATED ACTION PLAN

SCHOOL IMPROVEMENT GOAL (A <u>measurable</u> goal based on gap analysis) Goal # <u>2</u>: To enhance the current Kelvin Grove building climate by promoting Respect, Responsibility, Collaboration and Leadership with the entire learning community in terms of meeting the academic, social, emotional, and behavioral needs of ALL students. <i>This goal will be measure by the following:</i> <ul style="list-style-type: none"> ➤ <i>Student Climate Survey administered in Spring of 2011 to establish baseline data, then administered annually.</i> ➤ <i>Staff Climate Survey</i> ➤ <i>Electronic Satisfaction Survey on website</i> 		RATIONALE FOR THE GOAL (e.g., supporting data, reasons that the goal is a priority) There is a strong correlation between a positive school climate and achievement. While staff and student morale is not overwhelmingly low, there is room for significant improvement.		
STANDARD(S) SUPPORTED BY THIS GOAL All Standards related to Illinois Goals 1,2,5-18,22-25, 27-30		EVALUATION (How will the goal be measured?) <i>Include assessment instrument, assessment expectations, success indicators. Data analysis of suspensions, Student Surveys, Staff Surveys, Parent Satisfaction Survey</i>		
POSSIBLE FUNDING SOURCES (Use codes): General Revenue Funds (GR)				
SPECIFIC, MEASURABLE STEPS TO BE TAKEN (ACTIVITY/STRATEGY)	TIMELINE	PERSONS RESPONSIBLE	DETAILED EXPLANATION OF EXPENDITURES	COST ANALYSIS
<u>Activity 1</u> Develop and administer periodic climate surveys to students, parents and staff to assess climate strengths and areas of need. <u>Measure for the Activity</u> Student and staff surveys completed. <u>Population Served</u> 4-8 Grades and Staff	1/11 and ongoing	KG Admin	<ul style="list-style-type: none"> • Subscription to Survey Monkey 	SALARIES/STIPENDS \$ CONTRACTUAL SERVICES \$ MATERIALS/SUPPLIES \$ TRAVEL \$ OTHER (specify) TOTAL for the Activity \$
<u>Activity 2</u> Incentive activities will be provided to groups of students who demonstrate the appropriate character concepts. <u>Measure for the Activity</u> Attendance at incentive activities <u>Population Served</u> Grades 4-8	9/10 and ongoing	PBIS Committee KG Admin Student Coordinator	<ul style="list-style-type: none"> • Supplies and materials for incentive activities. Expenditures will be funded through the PBIS activity account. 	SALARIES/STIPENDS \$ CONTRACTUAL SERVICES \$ MATERIALS/SUPPLIES \$ TRAVEL \$ OTHER (specify) TOTAL for the Activity \$

<p><u>Activity 3</u> Highlight student activities and achievements</p> <p><u>Measure for the Activity</u> Press coverage Survey information Installation of picture frames and other media</p> <p><u>Population Served</u> 4-8 grades</p>	9/10 and ongoing	Climate Committee KG admin	<ul style="list-style-type: none"> Purchase of materials will be funded through the student activity account. 	SALARIES/STIPENDS \$ CONTRACTUAL SERVICES \$ MATERIALS/SUPPLIES \$ TRAVEL \$ OTHER (specify) TOTAL for the Activity \$
<p><u>Activity 4</u> Improve aesthetics of building and grounds to create a strong sense of school pride</p> <p><u>Measure for the Activity</u> Survey information Acquisition and installation of banners, pictures and other media</p> <p><u>Population Served</u> 4-8 Grades</p>	9/10 and ongoing	Climate Committee KG admin Building and Ground Director SIP Team	<ul style="list-style-type: none"> Purchase of materials will be funded through the student activity account. 	SALARIES/STIPENDS \$ CONTRACTUAL SERVICES \$ MATERIALS/SUPPLIES \$ TRAVEL \$ OTHER (specify) TOTAL for the Activity \$
<p><u>Activity 5</u> Encourage entire school community to join and participate in parent organizations</p> <p><u>Measure for the Activity</u> Staff and Satisfaction Survey information</p> <p><u>Population Served</u> 4-8 Grades</p>	9/10 and ongoing	All Staff Climate Committee SIP Team	<ul style="list-style-type: none"> Survey Monkey Subscription 	SALARIES/STIPENDS \$ CONTRACTUAL SERVICES \$ MATERIALS/SUPPLIES \$ TRAVEL \$ OTHER (specify) TOTAL for the Activity \$
<p><u>Activity 6</u> Staff leadership and teambuilding training in spring of 2011</p> <p><u>Measure for the Activity</u> Staff survey data</p> <p><u>Population Served</u> 4-8 grades</p>	1/11	All Staff SIP Team	<ul style="list-style-type: none"> Irons Oaks Adventure Education “Caring Classroom” facilitator training held at Kelvin Grove. Utilize School Improvement Day 	SALARIES/STIPENDS \$? CONTRACTUAL SERVICES \$ MATERIALS/SUPPLIES \$ TRAVEL \$ OTHER (specify) TOTAL for the Activity \$ 1040

<p><u>Activity 7</u> PBIS incentive items will be provided to individual students for purchase with earned KG Cash.</p> <p><u>Measure for the Activity</u> Monitor the amount of KG Cash used at the Hornet's Nest and athletic events.</p> <p><u>Population Served</u> Grades 4-8</p>	<p>1/11-ongoing</p>	<p>PBIS Committee SIP Team Junior Beta</p>	<ul style="list-style-type: none"> Supplies and materials for incentive items. Expenditures will be funded through the PBIS activity account. 	<p>SALARIES/STIPENDS \$?</p> <p>CONTRACTUAL SERVICES \$</p> <p>MATERIALS/SUPPLIES \$</p> <p>TRAVEL \$</p> <p>OTHER (specify)</p> <p>TOTAL for the Activity \$?</p>
<p><u>Activity 8</u> Establish Climate Committee</p> <p><u>Measure for the Activity</u> Minutes and artifacts created in meetings</p> <p><u>Population Served</u> Grades 4-8</p>	<p>1/11-ongoing</p>	<p>PBIS Committee Other committees as needed KG Admin</p>	<ul style="list-style-type: none"> None 	<p>SALARIES/STIPENDS \$?</p> <p>CONTRACTUAL SERVICES \$</p> <p>MATERIALS/SUPPLIES \$</p> <p>TRAVEL \$</p> <p>OTHER (specify)</p> <p>TOTAL for the Activity \$?</p>
<p><u>Activity 9</u> Increase staff and student participation and/or attendance at school events.</p> <p><u>Measure for the Activity</u> Staff and student surveys. Gate receipts for athletic events.</p> <p><u>Population Served</u> Grades 4-8</p>	<p>1/11-ongoing</p>	<p>Climate Committee PBIS Committee KG Admin SIP Team All Staff</p>	<ul style="list-style-type: none"> None 	<p>SALARIES/STIPENDS \$?</p> <p>CONTRACTUAL SERVICES \$</p> <p>MATERIALS/SUPPLIES \$</p> <p>TRAVEL \$</p> <p>OTHER (specify)</p> <p>TOTAL for the Activity \$?</p>

Reflection/Evaluation/Refinement Process

Reflection and evaluation will be completed through a variety of means. Goals and activities will be reviewed by the department chairs along with the school improvement chair at the end of the year for those goals that can be measured without the use of ISAT scores. During this time, the department chairs will begin the process of determining the progress of each one of the goals and determine any changes that need to take place for the following year and its respective school improvement plan. Recommendations will be given to building administration, along with rationale for the recommendations. This information will be reviewed by the building administration and the district curriculum director to determine the next year's schedule for staff development. During the fall, department chairs will meet again to review current data and further evaluate the success of goals and activities. The recommendations from the spring and fall will then be used to refine the school improvement plan. The following information will be used by school personnel to determine the progress of the school's goals for continual school improvement:

- Current ISAT scores for 4th and 7th grade Science, Reading, and Mathematics
- Current ISAT scores for 5th, 6th and 8th grade Writing, Reading and Mathematics
- Aimsweb scores for Fluency and Comprehension
- Anecdotal observations from staff and administration
- Survey results from students, staff, parents and community

Other Information

Developers of the Plan

Building Administration

Scott J. Pritchard, Principal

School Improvement Committee

Nicole Dickson

Lia Ditter

Mary Freeman

Maria Farina

Michele Kurczak

Mike Lindstrom

Matt MacFarlane

Marsha Prieboy

Dianna Skoczek

District Personnel

Donna Gray, Superintendent of Schools